



# WEX-301 EMERGENCY IP EXCHANGE

## FEATURES AND BENEFITS



WEX-301-WM

- Up to 10 external phone lines or SIP trunk
- Up to 100 internal emergency phone lines
- Multiple concurrent calls
- Line hunting for external lines
- All or group call capabilities
- Key switch to silence audible alarms
- Equipped with self-diagnostics
- Simple local and remote programmability
- Maintenance free
- Includes 10 internal line base license

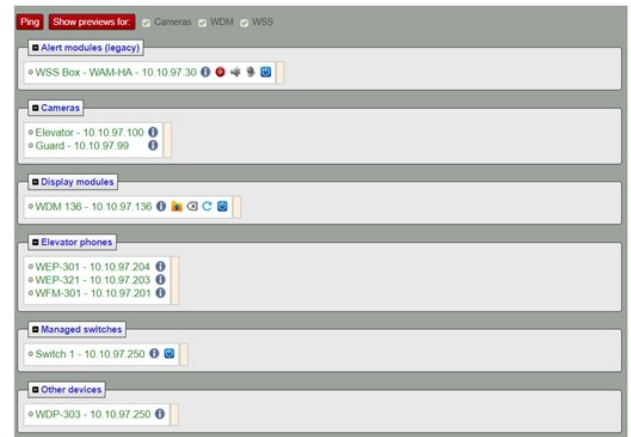
### TYPICAL APPLICATIONS

Elevator Emergency  
Communication Systems,  
Property Emergency  
Communication Systems,  
Property Intercom Systems

**Description:** The WEX-301 acts as the central switch or controller for the WebbSafe 300 IP system and is responsible for all call-routing and monitoring the health of the network. Each WebbSafe-300 system requires at least one WEX-301.

### WEX User Interface:

The WEX-301 is responsible for handling call-routing and monitoring all the devices connected to the network. Its bilingual GUI provides access to a set of features such as: Access to IP Cameras (If available), Texting, Equipment Status and Event Logs.



## Ordering Information

WEX-301-00	Exchange Module	Unhoused, 6.5"Wx4"Hx2"D
WEX-301-WM	Exchange Module	Wall mount housed with brushed stainless steel faceplate: 15"W x 4"H
WEX-301-RM	Exchange Module	Rack mount housed with brushed stainless steel faceplate: 17"W x 4"H

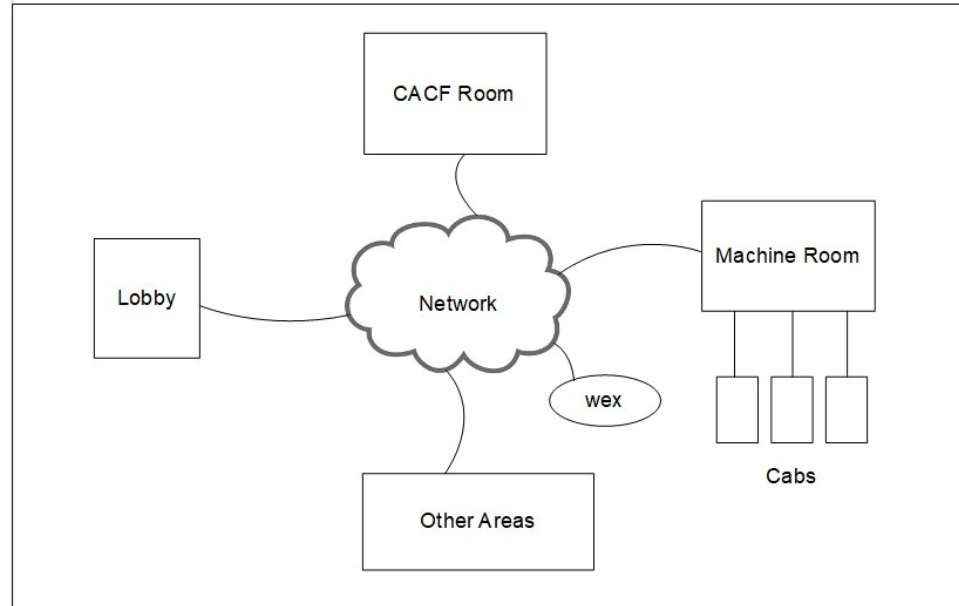
\*Both Rack Mount and Wall Mount have the same back box dimensions: 14"W x 3"H x 4"D





# WEX-301 EMERGENCY IP EXCHANGE

## System Overview:



## Specification:

<b>Power:</b>	POE or 5V - 3A, Max.30W
<b>Communication:</b>	SIP, Proprietary protocols over Ethernet
<b>Buzzer:</b>	80dB at 3m
<b>Cable Usage:</b>	Cat5
<b>Port Requirement:</b>	RJ45
<b>Distance Between Connectors:</b>	IEEE 802.3 Standard
<b>Output:</b>	Up to 5 NO or NC dry contact
<b>Visual Indicators:</b>	Normal, Silence and Alarm
<b>Display (Optional):</b>	2x16 Character LCD
<b>Temperature:</b>	0 - 60°C
<b>Certification/ Compliance:</b>	ADA, FCC - Part 68, Industry Canada, ASME A17.1, CSA B44
<b>Shipping Weight:</b>	3.8lb, 1.7kg
<b>Warranty:</b>	2 years from date of purchase

Supplied and serviced by:

*information may change without notice*



Member of the CIS Group of Companies  
Vancouver • Toronto • Montreal • Florida  
1-877-731-1010  
info@webbelectronicsinc.com  
[www.webbelectronicsinc.com](http://www.webbelectronicsinc.com)